



Pamaz[®]

FR Contract Fabrics

HARLEQUIN MORRIS & C^o SANDERSON **scion**

panaz.com



Introduction

We're thrilled to announce an exciting new partnership that marries the iconic and timeless designs of Sanderson Design Group's brands with our cutting-edge expertise in FR contract fabrics. This collaboration combines over a century of design expertise with decades of innovative fabric technology, redefining what's possible in the contract fabric marketplace.

Through this collaboration, we're proud to bring you an exclusive selection of print designs from the Sanderson Design Group's premium portfolio of brands – including Sanderson, Morris & Co., Harlequin, and Scion.

With our technical expertise and high-performance FR contract fabrics, each design will be elevated with our advanced technical specifications and cutting-edge digital print technology making them perfect for use in even the most demanding contract environments.



SANDERSON

Known for its timelessness and quintessentially English style, Sanderson is the home of iconic florals and illustrative botanicals. Founded in 1860 by Arthur Sanderson, Sanderson has become one of the most renowned interior design and decorating brands worldwide. A proud Royal Warrant holder since 1924,

Sanderson has a treasured archive housing a vast collection of fabrics, wallpapers and printing blocks dating back to the 19th century. Producing beautiful hand-painted designs, Sanderson looks back to move forward with exceptional designs that pave the way for a future that pushes the boundaries of heritage design.

All Sanderson print designs now available on fully contract FR base cloths exclusively from Panaz*

* If you can't see the colourway or design you want in this brochure please contact our Customer Experience Team on +44 (0) 1282 696969 or email us at sales@panaz.co.uk who will be able to help with pricing and minimum order quantities.





SANDERSON Design Index

Swatch images are for pattern reference only and are not represented to scale or a true match to colour.
Please order a sample or visit panaz.com for scale, colour and repeat information.



Abbeville Blue/Ivory A15



Anaar Tyrian Cherry D08



Anaar Woad A17



Ancient Canopy Sap Green B09

Ancient Canopy
‘This impressionist scene of ancient trees and arched, bowing branches, creates a dense canopy that draws the eye towards a secluded glade. Offering a beautiful feeling of perspective and depth, age old woodlands represent longevity, life, growth and strength.’



Ancient Canopy Forest Green B10



Annandale Willow/Seaspray B11



Annandale Parchment/Stone H10



Box Hill Eau de Nil/Linen A20



Cantaloupe Sandstone/Agave H11



Cantaloupe Matcha/Conch B13



Cantaloupe Seasalt/Quince B14



Chelsea White/Pink E05

Chelsea
‘Chelsea, the ultimate rose bouquet, is a Sanderson classic, first created in 1957.’

SANDERSON Design Index

Swatch images are for pattern reference only and are not represented to scale or a true match to colour.
Please order a sample or visit panaz.com for scale, colour and repeat information.



Chestnut Tree Grey Blue/Sage E06



Chestnut Tree Coral/Bayleaf F07



Chestnut Tree Wheat/Pebble H12



Dalimore Fawn/Multi H13



Dalimore Indigo/Multi A22



Dalimore Mulberry/Multi F08



China Blue Indigo/Neutral A21

China Blue
‘Stylised motifs of flowers and fruit in this design are adapted from a rare 18th-century French textile and was originally block printed.’



Robin's Wood Inkwood D10



Robin's Wood Forest Green/Sap Green B16



Robin's Wood Russet G04



Robin's Wood Mulberry F11



Rubus Blackberry F12



Rubus Raspberry F13



Stapleton Park Cream/Pink H14

Stapleton Park
‘Hand drawn for fabric by Pat Etheridge in 1990, this large-scale floral bouquet in a typically English style combines roses, cornflowers, foxgloves and hydrangeas with trailing stems and foliage..’

SANDERSON Design Index

Swatch images are for pattern reference only and are not represented to scale or a true match to colour.
Please order a sample or visit panaz.com for scale, colour and repeat information.



Summer Harvest Silver/Corn E07



Summer Harvest Claret/Olive D11



Summer Harvest
Cornflower/Wheat A26



Woodland Berries Bayleaf/Fig B18



Woodland Berries
Rosehip/Moss D12



Woodland Berries Grey/Silver E08



The Allotment Fennel B17

The Allotment
'Displaying the orderly nature of an allotment, rows of vegetables, potting sheds, greenhouse, hen houses and beehives adorn this whimsical fabric design.'



MORRIS & Co

Morris & Co. is the original home of the celebrated textile designer William Morris and the company he launched over 160 years ago. Founded in 1861 as Morris, Marshall, Faulker & Co. (as it was known), Morris & Co. is a culmination of Morris' life work, his legacy, and those of his contemporaries that made up his pioneering company. As a political theorist, publisher, environmental campaigner, poet, and outstanding designer, William Morris (1834–1896) was one of the single most influential figures of the nineteenth century. Today, the brand builds on that proud heritage with the inventive reimagining of Morris & Co. classics, ever upholding the impeccable standard of craftsmanship that has defined all Morris & Co. products since inception. Guided by the creative intuition of William Morris, designs are inspired by treasures in the Morris & Co. archive, thoughtfully reimagined for today's audience.

All Morris & Co print designs now available on fully contract FR base cloths exclusively from Panaz*

* If you can't see the colourway or design you want in this brochure please contact our Customer Experience Team on +44 (0) 1282 696969 or email us at sales@panaz.co.uk who will be able to help with pricing and minimum order quantities.

panaz.com



MORRIS & C^o Design Index

Swatch images are for pattern reference only and are not represented to scale or a true match to colour.
Please order a sample or visit panaz.com for scale, colour and repeat information.



Acanthus Leaf Green B08



Acanthus Slate Blue/Thyme A02



Bramble Indigo/Mineral A03



Bramble Sunflower C02



Golden Lily Mineral A04



Blackthorn Green B01

Blackthorn
‘A force of nature, Blackthorn was first designed in 1892 by John Henry Dearle. Beginning life as wallpaper, Blackthorn’s beguiling charm soon found itself on fabric. Always retaining its original brilliance in authentic, archival colourways, with a few, fresher tones sparingly mixed in, Blackthorn remains a firm favourite.’



Chrysanthemum Toile
Cochineal Pink F02



Chrysanthemum Toile
Slate E03



Chrysanthemum Toile
Willow B02



Honeysuckle & Tulip
Privet/Honeycombe B04



Honeysuckle & Tulip
Woad/Thyme A08



Honeysuckle & Tulip
Wine/Bayleaf D03



Fruit Cream/Teal H02

Fruit
‘An abundance of ripened pomegranates hangs temptingly from the branches of an overflowing tree, growing amongst the abundant flora. Printed over fine branches in the background to give the design greater depth, Fruit is one of the first William Morris designs, produced in 1864, demonstrating early on its creator’s skill as a pattern maker.’

MORRIS & C^o Design Index

Swatch images are for pattern reference only and are not represented to scale or a true match to colour.
Please order a sample or visit panaz.com for scale, colour and repeat information.



Kelmscott Tree Woad/Wine A07



Pimpernel Indigo/Hemp A10



Marigold China Blue/Ivory A05



Marigold Indigo/Linen A06



Pimpernel Bayleaf/Manilla B05



Pimpernel Cobalt/Mineral A09



Pimpernel Ink/Sage A11

Pimpernel
'Ensnaring and intoxicating, the swirling rhythm and depths of Pimpernel have an ethereal appeal. Texture and drama unfolds with every twist and turn of Pimpernel's flowerheads.'



Rosehip Mineral/Blue A12



Rosehip Linen/Ecru H05



Rosehip Thyme B06



Simply Severn
Bayleaf/Annato B07



Simply Severn
Cochineal/Willow F04



Simply Strawberry Thief
Cochineal/Willow F04



Simply Strawberry Thief
Slate/Vellum E02



Pink & Rose Manilla/Wine H03

Pink & Rose
'Curving and entwined, this floral trailing fabric was designed by William Morris in 1890 and was originally a large-scale block-printed wallpaper. This stylised design has now been redrawn and adapted as a furnishing fabric that recreates the subtle effects of the transparent inks used to print the original.'

MORRIS & C^o Design Index

Swatch images are for pattern reference only and are not represented to scale or a true match to colour.
Please order a sample or visit panaz.com for scale, colour and repeat information.



Strawberry Thief
Crimson/Slate D04



Strawberry Thief
Indigo/Mineral A03

Strawberry Thief
‘A cheeky bird pecks at delicious strawberries on this enticing fabric suitable for upholstery and curtains. Reproduced with subtle textures to retain the look of the original hand-printed version of the design.’



Strawberry Thief Slate/Vellum E02



Willow Boughs Cream/Green H07



Willow Boughs
Cream/Pale Green H08

Willow Boughs
‘Willow Boughs, designed in 1887 is one of William Morris instantly recognisable patterns. Entwining stems and delicate willow leaves combine in this enduring design which defines Morris abiding reputation.’



Snakeshead Claret/Gold D05

Snakeshead
‘Snakeshead was originally designed by William Morris in 1876. The dramatic flame like motif and alternating spiky clusters of foliage seem held in suspension by the delicate scrolling tendrils that form the pattern’s background.’



Snakeshead Indigo/Hemp A10



Snakeshead Pewter/Gold E04

HARLEQUIN

With a focus on colour and the creativity it sparks in interiors, Harlequin celebrates the joy of self-expression through design individuality. Global travels, far-flung places and the natural and architectural worlds inspire designs. This lens on life is projected through a mastery of colour, exploring techniques through the hands of Harlequin's designers. With a broad palette that ignites all the senses, Harlequin journeys through styles, influences, and palettes to create interiors that reflect personality. Backed by science, the road to creativity is a merging of design and scientific research. Harlequin explores the positive power of colour and the importance of palette choices in shaping who we are and how we express ourselves.

All Harlequin print designs now available on fully contract FR base cloths exclusively from Panaz*

* If you can't see the colourway or design you want in this brochure please contact our Customer Experience Team on +44 (0) 1282 696969 or email us at sales@panaz.co.uk who will be able to help with pricing and minimum order quantities.

panaz.com



panaz.com



HARLEQUIN Design Index

Swatch images are for pattern reference only and are not represented to scale or a true match to colour.
Please order a sample or visit panaz.com for scale, colour and repeat information.



Alotau Fig Leaf/Tree Canopy B37



Alotau Celestial/Ink A43



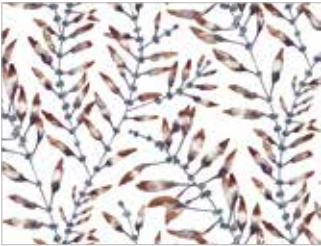
Alvaro Honey/Slate/Topaz C08



Alvaro Lime/Palm/Palm B38



Alvaro Harissa/Jute/Jet D25



Chaconia Amber/Slate D14



Chaconia Lagoon/Linden A30



Distortion
Tabacco/Slate/Clay G05



Distortion
Adriatic/Ink/Parchment A27



Floreana Bleached Coral/Fig Leaf/Succulent B19

Floreana
'A botanical extravaganza, originally made collaboratively by the Harlequin design team, Floreana has a repeat pattern, layered with various palm and leaf designs in an overlapped style.'

HARLEQUIN Design Index

Swatch images are for pattern reference only and are not represented to scale or a true match to colour.
Please order a sample or visit panaz.com for scale, colour and repeat information.



Melodic
French Ochre/Paper Lantern D13

Melodic
‘The rhythmic beats of our favourite song have inspired this statement geo. It’s the perfect split between pattern and plain.’



Melodic
Japanese Ink/Origami A29



Melodic
Stone/Awakening H15



Melora Fig Leaf/Paprika/Azul B21



Melora Blush/Eucalyptus/Sand F15



Klimt
‘Klimt is inspired by an archive print with arches arranged in a layered style. This drapery fabric makes an artistic impact on interiors.’



Klimt Kelly/Aqua B20



Klimt Ink/Honey A28

HARLEQUIN Design Index

Swatch images are for pattern reference only and are not represented to scale or a true match to colour.
Please order a sample or visit panaz.com for scale, colour and repeat information.



Torillo Sky/Cornflower/Linen A31



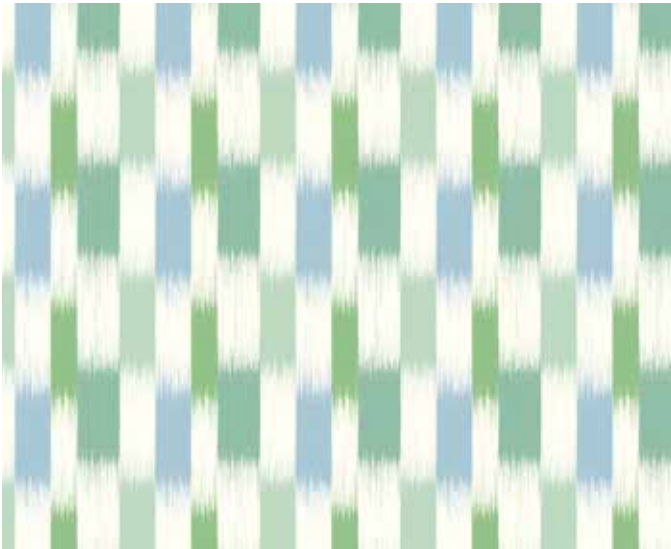
Torillo Emerald/Azul/Pistachio B23



Tree Tops Baked Terracotta/ Azul/ Honey D15



Tree Tops Forest/Kelly/Aqua B24



Utto Kelly/Sky B25

Utto

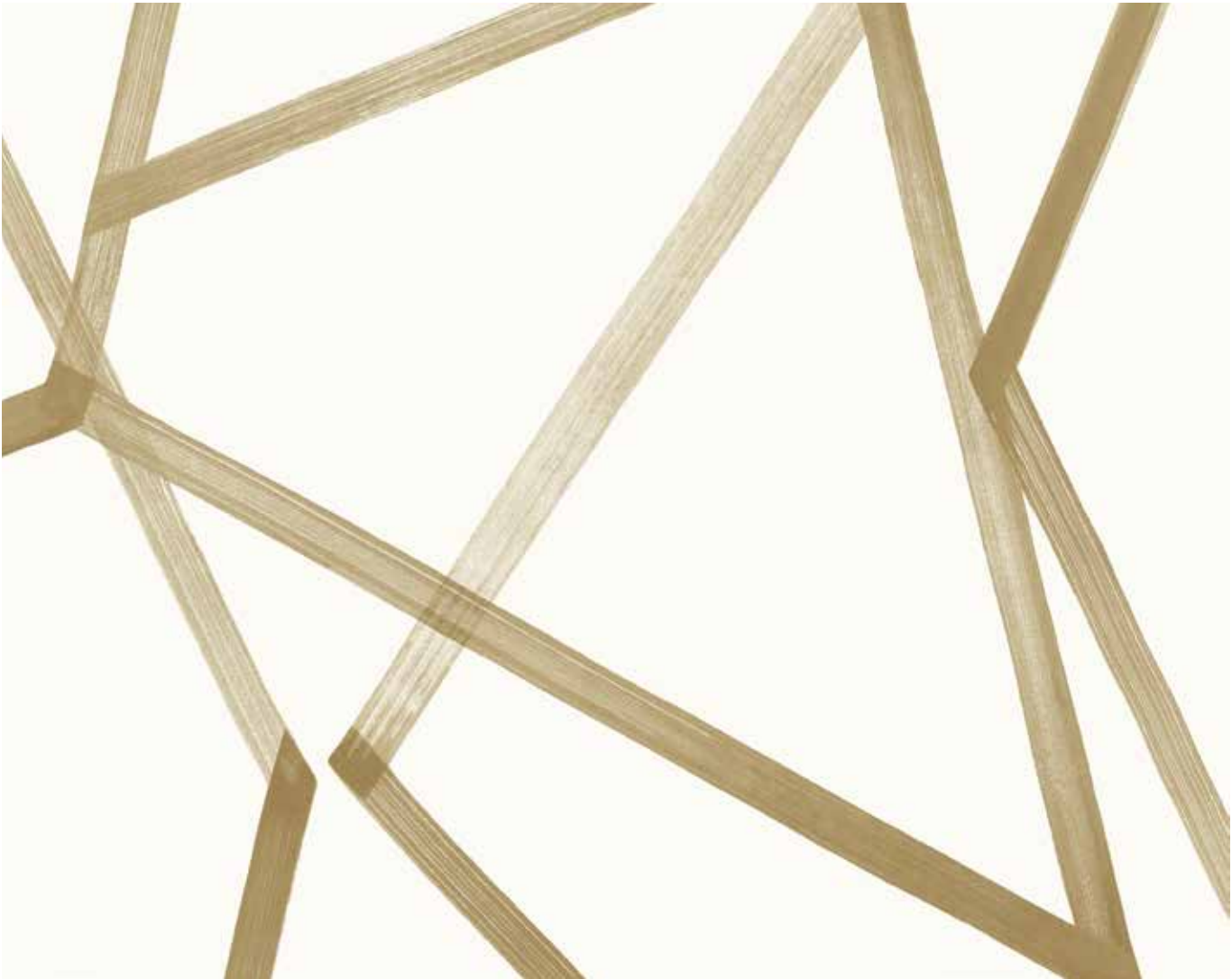
‘Utto has an Ikat edge, creating a woven stripe in printed form, using tonal colours in a paired back palette for ease of application.’



Utto Black Earth/Taupe G08



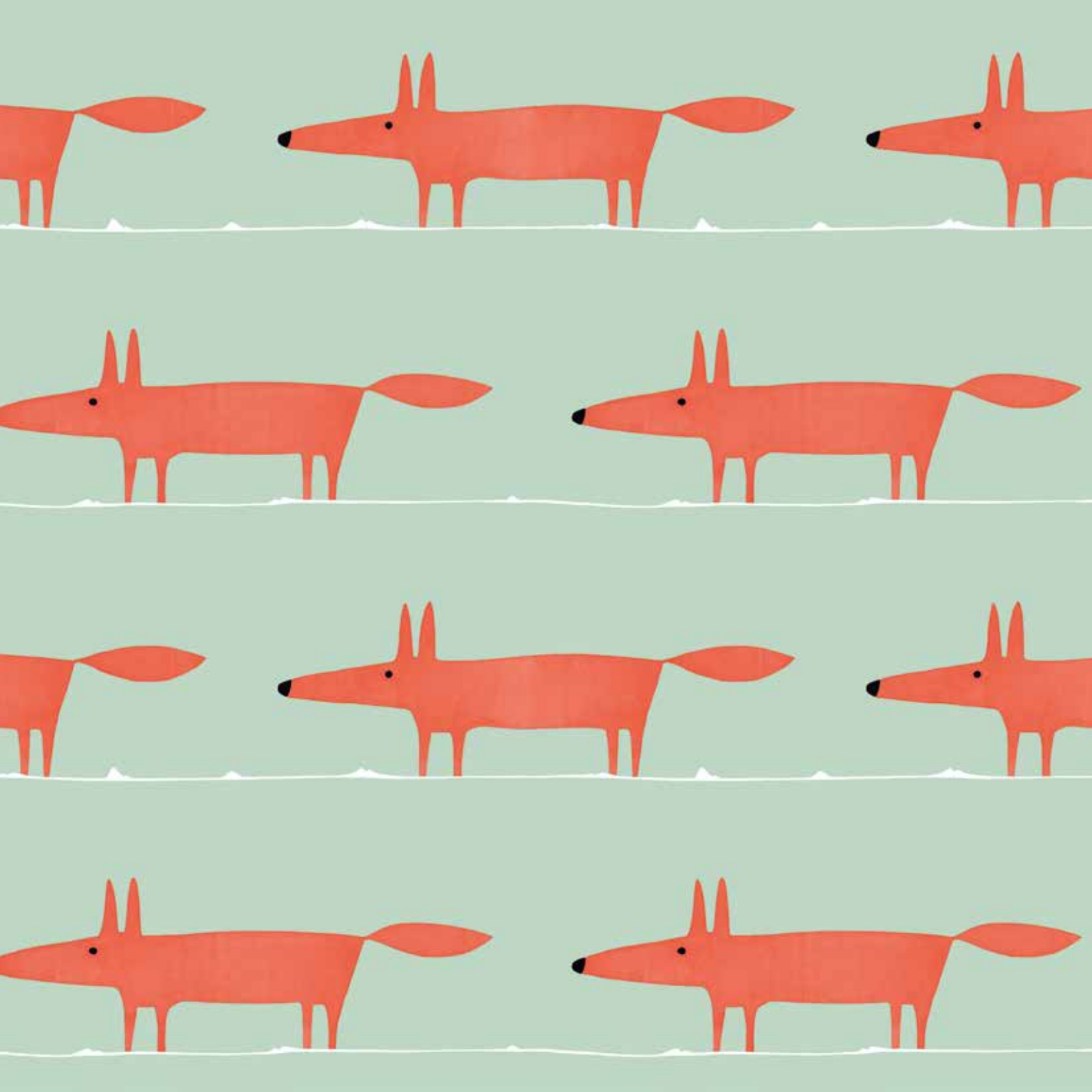
Utto Indigo/Azul A32



Sumi Oyster/Gold C03

Sumi

‘Sumi in its original guise is a large-scale geometric with clean painted lines associated with oriental design. A smart icon of modern design, this print has been translated into an abstract, block colour design for fabric.’



scion

Since 2012, Scion has been creating charismatic British design for the contemporary home. From iconic characters to design stories with modernist flair, our studio of talented designers brings an archive of pattern to the modern drawing board, always with a witty edge. Daring design collections with touches of whimsy have made Scion recognisable as the bold brand of British pattern. This resolutely British aesthetic comes together in a fresh palette of colour combined with mid-century influences to create a contemporary brand that brings joy to modern interiors.

All Scion print designs now available on fully contract FR base cloths exclusively from Panaz*

* If you can't see the colourway or design you want in this brochure please contact our Customer Experience Team on +44 (0) 1282 696969 or email us at sales@panaz.co.uk who will be able to help with pricing and minimum order quantities.

panaz.com



scion

Design Index

Swatch images are for pattern reference only and are not represented to scale or a true match to colour.
Please order a sample or visit panaz.com for scale, colour and repeat information.



Akira Denim/Midnight A33



Akira Berry/Ochre D16



Akira Ginger/Teal D17



Baja Grape/Blush/Indigo F18



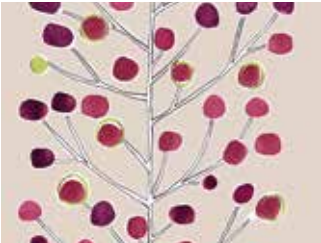
Baja Cinnamon/Slate/Charcoal C04



Berry Tree Neutral/Tangerine/
Powder Blue/Lemon D18



Berry Tree
Emerald/Lime/Chalk B26



Berry Tree
Mink/Plum/Berry/Lime F19



Berry Tree
Cream/Stone/Hessian H16



Berry Tree Peacock/Powder Blue/Lime/Neutral A34



Blomma Kiwi/Pumice/Marine B27

Blomma
'A captivating floral trail design depicting overlapping stylised flower heads and leafy branches.'

scion

Design Index

Swatch images are for pattern reference only and are not represented to scale or a true match to colour.
Please order a sample or visit panaz.com for scale, colour and repeat information.



Hikkaduwa Spiced Pear B29



Hikkaduwa Tropicana B28



Hubali Grasshopper B30



Esala Tropicana B28

Esala
'A riot of colour, this hero design of naively drawn jungle plants brings a scheme together.'



Lohko Honey/Paper C05

Lohko
'This oversized abstract design, with flat interlocking boulder shapes, is available in bold colourways.'



Lohko Indigo/Jasmine A35



Lohko Mist/Graphite A36



Lohko Liquorice/Hemp K02

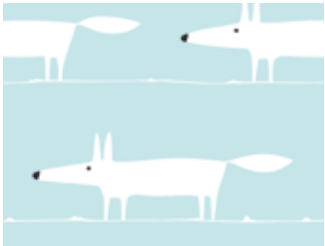


Lohko Paprika/Pebble D20

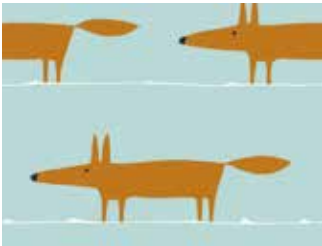
scion

Design Index

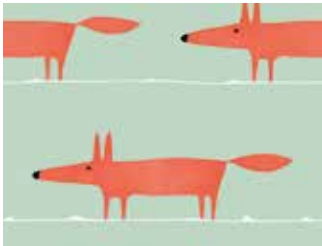
Swatch images are for pattern reference only and are not represented to scale or a true match to colour.
Please order a sample or visit panaz.com for scale, colour and repeat information.



Mr Fox Sky A37



Mr Fox Sky/Tangerine/Chalk A38



Mr Fox Sage/Poppy B31



Padukka Flamenco B32



Padukka Tangerine D21



Padukka Twilight A39



Parlour Palm Gecko B34

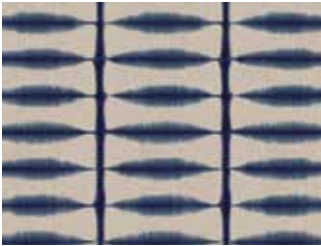


Parlour Palm Frost A40

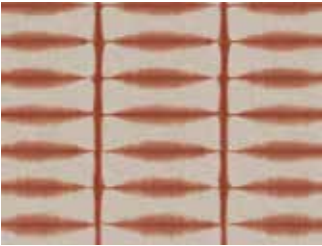


Parlour Palm Citrus B33

Parlour Palm
'A finely drawn interpretation of tropical leaves Parlour Palm is a bold, leafy design guaranteed to make a statement.'



Shibori Indigo/Linen A06



Shibori Chilli/Linen D22



Soetsu Stonewash/Papaya A41



Soetsu Spice/Raffia D23



Tetra Pear/Multi B35

Tetra
'An abstract interpretation of a graphic tree featuring de-constructed, overlaid shapes.'

scion

Design Index

Swatch images are for pattern reference only and are not represented to scale or a true match to colour.
Please order a sample or visit [panaz.com](#) for scale, colour and repeat information.



Yoki Terracotta/Moss/Amber D24



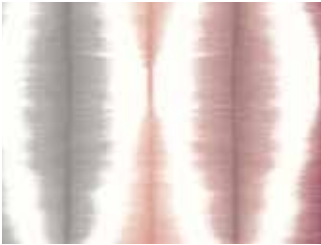
Yoki Fig/Amber/Indigo F21

Yoki
‘Cleverly interlinked, semicircular shapes, form a sinuous wave-like stripe.’

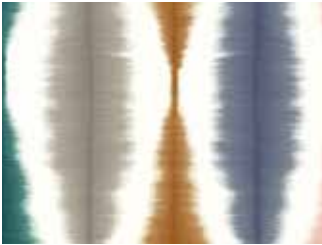


Usuko Berry/Ochre D16

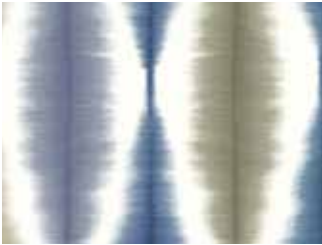
Usuko
‘Add pops of colour with this striking multicoloured ikat fabric design.’



Usuko Cranberry/Rose F20



Usuko Olive/Ginger B36



Usuko Ink/Slate A42



Usuko Rust/Marine C07

Kinder To The Environment

Digital Print Technology at Panaz

Digital print brings endless opportunities to the interior design community, here's why it's important to work with the best.

Traditional printing techniques are reliant on lots of water and use harmful chemicals – not great for the environment. This is why in 1985 Panaz pioneered sublimation printing techniques for contract FR fabric, using dry inks and chemical free process. This is the most environmentally friendly printing technique in contract fabrics. Now also powered by solar energy, the Panaz facility remains the most eco-friendly of its kind to this day.

Sublimation printing works by permanently embedding the dry ink into the fabric. This leaves the design with incredible light fastness and means they are fade free. Panaz lead the industry with unmatched lead times for both sampling, usually despatched within 24 hours, and print orders, usually despatched within 5 working days, all shipped from Panaz HQ in the North of England.

If you choose to pursue your digital print journey with Panaz, you will be guaranteed excellent service, with unbeatable lead times, and designs and cloths to suit any environment – from the most creative to the most challenging.



Base cloth choices

Flame Retardant Contract Base Cloths



These curated printed collections from the Sanderson Design Group archive will feature on nine different base cloths for upholstery, drapery and other soft furnishings. This includes a multi-purpose velvet, a linen look upholstery and drapery cloth, as well as a soft sheer and textured blackout.

There are waterproof, stain resistant and antimicrobial options for the most challenging environments, and many are IMO accredited for marine environments. All, of course, fully contract FR and high-performance fabrics.

We offer base cloths suitable for:

- Upholstery
- Window Curtains
- Blackout Curtains
- Sheer Curtains
- Bedding & Accessories

We offer base cloths that are:

- All Fully Contract FR
- Waterproof
- Stain Resistant
- Antimicrobial
- IMO FR






It is recommended that you order a sample first before ordering a large quantity.
e-mail: samples@panaz.co.uk or contact your Panaz sales representative.

For **wash and care instructions**, and further information on the properties of each base cloth visit panaz.com

Base cloth selection and end uses

Base Cloth	Harlequin	Morris & Co	Sanderson	Scion
531 Slub Effect Drapery and Bedding	•	•	•	•
540 Faux Linen Light Drapery and Bedding	•	•	•	•
532 Textured Blackout Drapery	•	•	•	•
544 Sheer Drapery	•	•	•	•
546 Multi-Purpose Velvet	•	•	•	
530 Satin Filament Drapery and Bedding				•
541 Faux Linen Upholstery	•	•	•	
548 Wool Effect Waterproof Upholstery	•	•	•	•
537 Textured Waterproof Upholstery				•

End Uses			
Base Cloth	Curtains	Upholstery	Bedding and Accessories
531 Slub Effect Drapery and Bedding	•		•
540 Faux Linen Light Drapery and Bedding	•		•
532 Textured Blackout Drapery	•		
544 Sheer Drapery	•		
546 Multi-Purpose Velvet	•	•	•
530 Satin Filament Drapery and Bedding	•		•
541 Faux Linen Upholstery		•	
548 Wool Effect Waterproof Upholstery		•	
537 Textured Waterproof Upholstery		•	

Bedding refers to bedthows, bedrunners and decorative bed accessories.

Base cloth descriptions



531 Slub Effect Drapery and Bedding
A linen look washable FR Polyester blend perfect for curtains, bedding and accessories.



540 Faux Light Linen Drapery and Bedding
A natural textured fabric with the look and feel of linen.



532 Textured Blackout Drapery
A textured natural looking fabric created to block out light.



544 Sheer Drapery
Beautifully soft with a natural feel, this inherently FR woven sheer with Trevira CS yarns looks stunning when printed. Use with Textured Blackout to create layered window treatments.



546 Multi-Purpose Velvet
A luxurious, FR velvet that is washable and multi-purpose. Can be used for upholstery, curtains, bedding and accessories.



530 Satin Filament Drapery and Bedding
Soft, silky satin, for curtains, bedding and accessories.



541 Faux Linen Upholstery
A warm textured weave with antimicrobial and stain resistant properties. Suitable for upholstery.



548 Wool Effect Waterproof Upholstery
A 'wool like' woven textured fabric with antimicrobial, stain resistant and waterproof properties. Suitable for upholstery.



537 Textured Waterproof Upholstery
A subtle linen effect fabric with antimicrobial and waterproof properties. Suitable for upholstery.

NB. All Morris & Co designs are suffixed **MO**, Sandersons **SA**, Harlequin **HA**, Scion **SC**

All Sanderson, Morris & Co, Harlequin and Scion print designs now available on fully contract FR base cloths exclusively from Panaz*

* If you can't see the colourway or design you want in this brochure please contact our Customer Experience Team on +44 (0) 1282 696969 or email us at sales@panaz.co.uk who will be able to help with pricing and minimum order quantities.

How to place your order

Step 1

Choose your design and colour

Browse the printed designs in this brochure or visit our website www.panaz.com for more options. Select your chosen design and colourway e.g. Abbeville Blue/Ivory.

Step 2

Choose your base cloth

Select a base cloth option from our upholstery or curtain base cloth guide on the previous page, suitable for your project needs. e.g. 531 Slub Effect Drapery and Bedding.

Step 3

Order your sample

We recommend ordering a sample prior to placing your order via panaz.com or samples@panaz.co.uk to ensure colour and design is as expected.

Step 4

Place your order

Once you are happy with the colour and design, place your order via sales@panaz.co.uk (minimum order 1 linear metre)

For further queries

Get in touch via sales@panaz.co.uk or speak directly to Panaz on **01282 696969**.



Contact Us

Get In Touch

Keep In Touch

Call: +44 (0)1282 696969
e-mail: sales@panaz.co.uk
Visit: panaz.com



www.panaz.com



Pamaz[®]

Tel: +44 (0)1282 696969 e-mail: sales@panaz.co.uk
Visit: panaz.com